



Wimmera Growers of Australian Plants Inc

Registered No: A0010491R

WGAP PO Box 533, Horsham. 3402 Email: wimmera@apsvic.org.au

President: 0491 091 115 Secretary: 0417 059 312

May June July 2024 Newsletter

Program for 2024

Thursday 2 May, 7:30pm. Warracknabeal Town Hall Supper Room:

Judy Allen - Mallee Flora Suitable for Cultivation in Gardens

Judy has featured on ABC Gardening Australia her subject, Indigenous Plants Segment with Josh Byrne. She has been a contributor to several books and spoken on various gardening and biodiversity subjects at national conferences and ran several workshops.

Specimen Table – please bring flowering plants from your garden.

Supper: Warracknabeal members Plants for Raffle: Warracknabeal members (free raffle ticket for wearing a name tag). If any members do not have a name tag please contact Mary Donald on wimmera@apsvic.org.au and she will organise one for you.

Thursday 6 June, 7:30pm. Horsham CWA Hall: (original speaker unable to attend)

Maree Goods- Gardens for Wildlife.

Maree is no expert but has been observing the wildlife in her garden for several years and through these observations has learnt what it requires to build a suitable garden to attract wildlife.

Specimen Table – please bring flowering plants from your garden.

Supper: Plants for Raffle:

July: No Meeting

Sunday 4 August Visit the WAMA garden and then onto the garden of Neil and Wendy Marriott. BYO morning/afternoon tea and lunch. More details later.

Saturday 7 and Sunday 8 September (a weekend away)

Currency Creek Arboretum and garden visits on the Fleurieu Peninsula, South Australia

This weekend excursion is in conjunction with APS Warrnambool and APS Grampians Group. It will be a fabulous weekend and we will either be staying at Goolwa or Victor Harbour.

Day 1 - Saturday: Garden visits on the Fleurieu Peninsula

Day 2 - Sunday: Currency Creek Arboretum (79 km south of Adelaide and 8 km north of Goolwa) was established and is managed by Dean Nicolle. The arboretum has the largest collection of eucalypt species in the world, with over 900 species and subspecies (and over 8000 individual plants) having been planted on the site, more than double the number of eucalypt taxa being grown on any other one site elsewhere. Dean Nicolle is the author of many books. In the afternoon there will most likely be another garden visit.

More details to follow.

Sunday 6 October, 1pm. Garden visits in the Horsham/Haven area. More details to follow.

Saturday 12 and Sunday 13 October. Horsham Spring Garden Festival

November. TBA.

Christmas Breakup. TBA.

Shows, Conferences, Plant Sales, and other items of Interest

11 May 2024 - APS Mornington host the next APS Vic COM Meeting at Fenton Square, and a visit to the Seaford Banksia Arboretum in the afternoon.

11 May 2024 – APS Melton Bacchus Marsh Plant Sale, at St Andrews Uniting Church, Bacchus Marsh, 9 am to 1 pm. For more details from David Pye, Ph 0417 289 369.

27 and 28 July 2024 – APS Bendigo host COM and full weekend of activities.

5 September 2024 – Wimmera Biodiversity Seminar. Further details to follow.

7 September 2024 – APS Cardinia Regional Annual Plant Sale, Akoonah Park, Berwick from 8 am to 4 pm.

7 September 2024 – APS Mitchell Expo and Plant Sale, Wallan Multipurpose Centre, Bentinck Street, Wallan.

14 & 15 September 2024 APS Yarra Yarra Australian Plants Expo. Eltham Community and Reception Centre, 801 Main Rd, Eltham. 10am - 3pm

21 & 22 September 2024 – APS Grampians Group Pomonal Native Flower Show, Pomonal Hall.

21 & 22 September 2024 – Angair Wildflower Show & Art Show, Anglesea Memorial Hall, McMillan Street, Anglesea. 10 am to 4 pm. Wildflower display, indigenous plant sales, art show and painting sales.

28 & 29 September 2022 – APS Bendigo Flower Show, Victory Christian College, Kairn Road, Strathdale, Bendigo. 9.30 am to 4.00 pm. \$5 entry, children free. Specialist native plant nurseries, books, garden accessories and more.

30 September to 4 October, 2024 – ANPSA 2024 Biennial Conference in Melbourne hosted by APS Victoria. [Visit https://www.anpsa2024conference.com/](https://www.anpsa2024conference.com/)



2 October 2024 - AJ Swaby Address at 3.30 pm as part of the ANPSA 2024 Biennial Conference. A public event, at The Round, Nunawading. Phillip Johnson speaking on the Chelsea Flower Garden and Garden Design.

5 October 2024 – Echuca Moama Native Flower Showcase. Details to follow.

19 & 20 October 2024 - Cranbourne Friends RBGV Spring Plant Sale. 10 am to 4 pm. Wide range of plants, plant list available one week before sale. Website: rbgfriendscanbourne.org.au

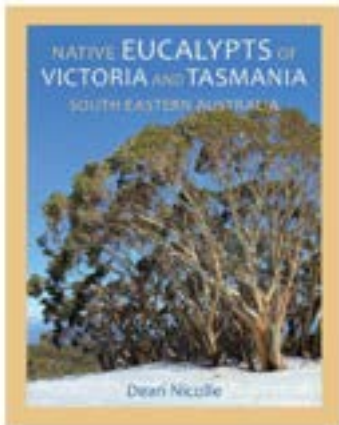
November 2024 – APS Wangaratta host APS Victoria Committee of Management meeting and AGM. Details to follow.

2025 15th FJC Rogers Seminar 2025 on Epacridaceae hosted by APS Mornington Peninsula.

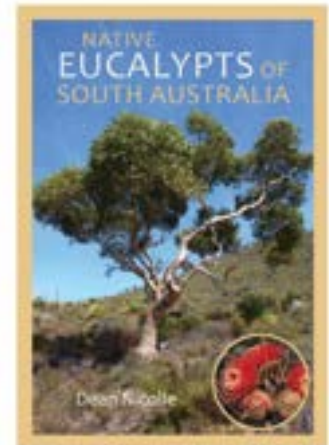
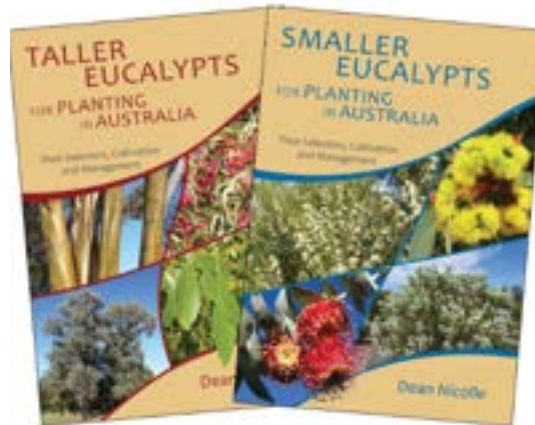
2026 ANPSA 2026 Biennial Conference, planned to be held in Alice Springs.

Books

Dean Nicolle is the author of many books. See some of them below. Check out the book list in *Growing Australian* to all the books available at discount prices to our members. Book sales: 03 9872 3583 or books@apsvic..org.au



Native Eucalypts of Victoria and Tasmania, Smaller & Taller Eucalypts for Planting in Australia
South-eastern Australia



Native Eucalypts of South Australia

Grampians Endemic Wildflowers

- presentation by Neil Marriott, March meeting

Our guest speaker, Neil Marriott, gave a very interesting and educational presentation on the Grampians Endemic Wildflowers. It is a cuesta landform, eg steep cliff or escarpment on one side and a gentle dip or back slope on the other.



The Grampians covers 0.74% area of the state but it has over 30% of the States flora with 70-78 Endemic Species. It is an isolated mountain range and there are seven Broad Vegetation Types:

- Inland Slopes Woodland
- Sedge-rich Woodland
- Herb-rich Woodland
- Dry Foothill Forest
- Plains Grassy Woodland
- Valley Grassy Forest
- Grassland

There are over 40 Ecological Vegetation Classes (EVC's) the greatest concentration anywhere in Victoria.

- Extensive cliffs
- Rocky gullies
- Forested crags
- Mountain tops
- Rocky streams
- Fern lined pools
- Lakes and swamps
- Wetlands
- Wetlands
- Treeless plains
- Sub-alpine Mountains eg Mt William



A fern lined pool.



Grampians Mint-bush *Prostanthera lasianthos* ssp *coriacea*.



Grampians Bitter-pea, *Daviesia laevis*.



Grampians Rice-flower, *Pimelia pagophylla*.



Grampians Parrot-pea, *Dillwynia areodoxa*.



Rough Daisy-bush, *Olearia asterotricha* ssp *asterotricha*.

The Blue Mountains - A Botanic Garden Crawl

- presentation by David Handscombe, April meeting

David gave us a wonderful taste of some of the Botanic Gardens that can be visited in NSW. The first was the National Botanic Garden in Canberra. This garden has a series of styles, Rainforest Walk, Banksia Garden, and Red Centre Garden. Whilst part of the garden is quite old areas, there are some quite new gardens to explore.



Above: an old section of the garden.
Right: a new section of the garden.



Some years ago Canberra experienced some fires where nearby pine forests were burnt out. The locals did not want to replant pines so instead an Arboretum was born. The Arboretum is quite extensive with more to be planted out. It also holds the national Bonsai Collection.

Other gardens visited were Mt Tomah with 28 hectares of curated gardens and 244 hectares of wilderness, Australian Botanic Garden Mt Annan which now houses the new NSW Herbarium, and Illawarra Grevillea Park.



The Arboretum from Dairy Farmers Hill Lookout.



View from the Mt Tomah Information Centre/Cafe.



Left: *Grevillea* 'Golden Lyre'.
Right: *Grevillea* 'Orange Wow'.



A couple of interesting plants for the home garden

Graham Lay



Eremophila muelleriana.

plant to become leggy, but it can be kept reasonably compact with regular tip-pruning. When in full-flower, this *Eremophila* is a show-stopper.

E. muelleriana may be difficult to find unless you visit a specialist native plant outlet. The couple of attempts that I have made with cuttings have proved unsuccessful, so grafting is probably the way to go if you know how to do it.

I have two plants of *Eremophila muelleriana* in my Horsham garden, both grafted onto a species of *Myoporum*. The larger specimen is a rounded, rather open shrub about a metre high and wide after three years. Facing north, it receives full sun from late morning onwards. The soil is loamy and reasonably well-drained. The flowers are an unusual, very deep maroon, appearing mainly in spring, but with some flowers through summer. There is a tendency for the



Eremophila muelleriana.



This remarkable wattle, *Acacia leprosa*, has an interesting discovery story which anyone can read about via a google-search.

My specimen was bought locally two and a bit years ago and is already over two metres tall. It is growing in well-drained Horsham ground and receives mainly morning sun. It is an open, slightly-weeping shrub with attractive foliage and red ball-flowers instead of the usual yellow flowers for this species. The bush was covered in flowers last spring and signs suggest that there may be another flush of colour this autumn.

Some seed was produced on my plant last season, but media sources I've read report that seedlings will not necessarily come true to colour. Worth a 'go' all the same. Some Wimmera growers have told me that cuttings will strike reasonably well, but you might need to be patient. Overall, a really interesting plant.

Left: *Acacia leprosa.*

Photos of your garden

If you have any photos of your garden or a specific plant in flower please feel free to email wimmera@apsvic.org.au and if possible it will be used for future newsletters. You might be able to tell us a little bit about it also would be greatly appreciated.

Plant Raffle

Each meeting we have a plant raffle. One of our members provides about six plants and tickets sell for \$1 each. There is a free raffle ticket for each member who wears a name tag. If you do not have a name tag please contact our secretary, Mary and she will organise one for you. wimmera@apsvic.org.au

The Stuff in our Garden

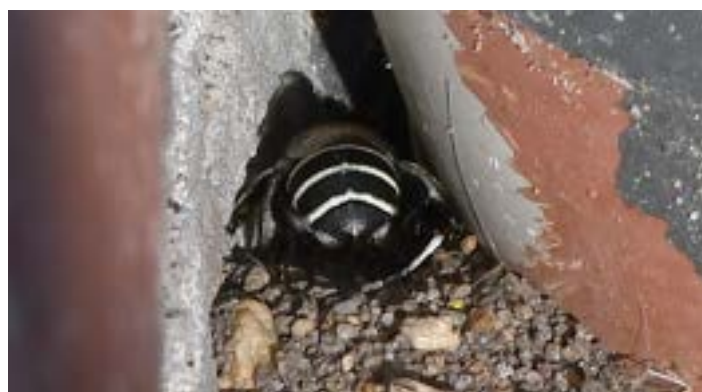
Maree Goods

The Blue-banded bees have been going gungho in our garden but will slow down soon or disappear altogether as the weather gets colder. I usually recognise them firstly by their hum before I spot them. It is different sound to the normal honey bee. They have been working over many of our blue flowering natives, *Isotoma*, *Scaevola*, *Coleus* (use to be *Plectranthe*) and one *Eremophila*. Blue-banded bees make their nests in the ground and often next to walls of a house. They love old houses where the mortar is soft and they can burrow into it.

Something we didn't have in Horsham was a bee house in the garden so we went out and purchased one (see photo below). When we lived on the farm we didn't have to worry because there were plenty of suitable sized holes made by borers in various shrubs and trees. Leafcutter and resin bees make their nests in holes in old trees or where ever they can find one a suitable size for their nest.



A Blue-banded Bee looking for somewhere to make it's home.



A Blue-banded Bee has made his nest between a downpipe and the wall of our house.



New bee house. We have just put up our bee house so probably too late this year but it will be ready for next season.

We have water points dotted throughout the garden. All at ground level. The reason for this is skinks, geckos and even our local Purple Swampheens can use them. The Purple Swampheens are becoming regular visitors since they have found one of the water points outside our office window.

Before COVID Graham and I visited the Echuca-Moama District APS Group. It was in April and the couple we stayed with had *Callistemon sabulatus* growing and in flower. They told us that it has flowers most of the year. I took some cuttings and hence have a couple of plants growing in our garden. They were not wrong. It usually has a flower or two but also it seems to have a flush of flowers every so often. Doesn't matter what time of the year. It's only a small *Callistemon* growing to about 1m high and bees love it.



Purple Swampheens using our water point. Please excuse the quality the photo as it was taken through a window, hence the big leaf in the top right-hand corner.



Callistemon sabulatus.

Neutrog

Closing dates for orders for 2024 are:

Winter: Closing date 03.05.2024 Pick up early June

Spring: Closing date 02.08.2024 Pick up early September

Summer: Closing date 02.11.2024 Pick up early December

BIOMETRIS \$60.00 (Inc. GST)

This is a new product and contains 150 capsules. See below for more detail on the product and how to apply. The Ultimate Probiotic. For the Prevention and Revival of tired, stressed and sick Indoor & Outdoor plants

BIOMETRIS™ is the ultimate probiotic developed to support and enhance a healthy microbiome for soil and plants. A thriving soil microbiome will help plants to build resilience to biotic and abiotic stress including environment, sickness, pests and disease.

BIOMETRIS contains a specifically chosen combination of in excess of 120+ species of functional microbes. These microbes have been preserved, capsulated and when diluted in water, these living organisms populate the soil and around the root zone to help:

Cycle nutrients

Liberate nutrients

Fix nitrogen

Produce plant growth hormones

Stimulate ongoing biological activity

APPLICATION:

Suitable for all plants/soil types. Dissolve one (1) capsule in 1L of warm (not boiling) water, stir. Add 100mL of this solution to a 9L watering can and apply across 8 -10m². Water in well. One litre (with 1 capsule) will be enough for 10 watering cans and cover 80 -100m².

TURBOCHARGE your existing Neutrog liquid by adding to any of Neutrog's liquid concentrates.

NOTE:

Maree Goods will be ordering this product and will divide it up into smaller quantities - 15 capsules per zip bag. The cost will be \$6 per bag. Let Maree know if you are interested in purchasing a bag of 15 BIOMETRIS capsules. She can be contacted by email: wimmera@apsvic.org.au or by phone 0427 832 249.